

CERTIFICATE OF COMPLIANCE NZTA T 12:2013

Applicator: 2006 Hino FC /
 Hofmann Cold Applied
 Plastic Applicator,
 registration number
 DGW904

Type: LA CAP

Owner: Fulton Hogan Ltd,
 T/A Coastline Markers
 P O Box 302-528
 North Harbour 0751



Test Description: The long-life pavement marking applicator described by this certificate has been tested under the conditions described and found to comply with the relevant requirements of NZTA Specification NZTA T12:2013

Test Conditions: The scope of the NZTA T12: 2013 recertification was as follows;

1. Application of Agglomerate Cold Applied Plastic to Schedule One, Agglomerate Cold Applied Plastic, in accordance with Coastline Markers Technical Specification, NZTA P30:2009 and NZTA T12:2013.
Tested at 150mm (continuous) and 150mm (intermittent)
2. Application of Audio Tactile Markings to Schedule Two, Cold Applied Plastic Audio Tactile, in accordance with Coastline Markers Technical Specification, NZTA M24:2006, NZTA P30:2009 and NZTA T12:2013.
Tested at: 150mm/250 pitch.
3. Application of Audio Tactile Markings to Schedule Three, Cold Applied Plastic Audio Tactile in combination with Agglomerate Cold Applied Plastic, in accordance with Coastline Markers Technical Specification, NZTA M24:2006, NZTA P30:2009 and NZTA T12:2013.
Tested at: 150mm/500 pitch

Test Identification:

- The Chassis number of the tested unit is JHDFC4JJPXXX12527
- The tests were carried out at Mitre 10 Mega Carpark, Albany on the nights 19th January and 13th February 2026.
- The materials used for the tests were:
 - Damar CAP Structure/ ATP
 - Potters Pristine Type B-HR (AC-07 adherence promoting coated) drop-on glass beads were used for all tests.

CERTIFICATE OF COMPLIANCE NZTA T 12:2013

Equipment Tested:	CAP Pump A	Kadcam	254112
	Benox Dosing Unit	Kadcam	254112
	Bead Applicators	Potters Speed Bearer	N/A
	Compressor	Fusheng TA80	612758
	Speedometer	Autoline 300	C1820

Applicator Speeds (kph):		150mm
	Schedule One	1.55
	Schedule Two	1.64
	Schedule Three	1.49

COPIED FROM NZRF REGISTER

SCHEDULE ONE

Agglomerate Cold Applied Plastic, in accordance with Coastline Markers Technical Specification, NZTA P30:2009 and NZTA T12:2013.

The markings when applied to flat electro-galvanised steel plates meet all dimension and performance requirements as specified in;
NZTA P30:2009 Specification for High Performance Roadmarkings and
NZTA T12:2013 Specification for Long-Life Pavement Marking Material Applicator Testing.

The values specified in NZTA P30:2009 and NZTA T12:2013 used for determination of compliance were as follows:

Gap length between segments

Where gap is 3.0m or more: $\pm 500\text{mm}$
 $\pm 150\text{mm}$

Where gap is less than 1.0m: $\pm 50\text{mm}$

Length of segment.

Where segment is longer than 5.0m; $\pm 150\text{mm}$

Where segment is shorter than 5.0m but longer than 1.0m; $\pm 75\text{mm}$

Where segment is shorter than 1.0m; $\pm 50\text{mm}$

Line width.

All line widths; + 10 %, - 5 % of the specified value. (100mm, 150 mm & 200mm)

Structured (Agglomerate) Cold Applied Plastic.

1. Material application rate of $2.5\text{kg/m}^2 \pm 10\%$
2. A coverage between 55% and 75%, and
3. Line appearing continuous when sitting in a passenger car.

Retroreflectivity.

AS/NZS 2009 Type B (drop-on) glass beads applied uniformly at a minimum rate of 300gm/m^2 .

Dry retroreflectivity; a minimum of $150\text{mcd/m}^2/\text{lux}$.

Wet retroreflectivity; a minimum of $80\text{mcd/m}^2/\text{lux}$

Day Time Visibility.

Minimum Qd of $100\text{mcd/m}^2/\text{lux}$

Colour.

White; a discolouration of not more than 4/5 from colour Y35 of AS2007S

Skid Resistance.

50 BPN or greater for roadmarkings with a dry film thickness of 0.9 mm or greater



SCHEDULE TWO

Cold Applied Plastic Audio Tactile, in accordance with Coastline Markers Technical Specification, NZTA M24:2006, NZTA P30:2009 and NZTA T12:2013

The markings when applied to flat electro-galvanised steel plates met all dimension and performance requirements as specified in;
NZTA M24:2006 Specification for Audio Tactile Profiled Roadmarkings, (alternative dimensional tolerances)
NZTA P30:2009 Specification for High Performance Roadmarkings and
NZTA T12:2013 Specification for Long-Life Pavement Marking Material Applicator Testing.

The values specified in NZTA M24:2006, NZTA P30:2009, NZTA T12:2013 used for determination of compliance were as follows:

Raised blocks.

Block height; + 15 %, - 5 % of the specified value. (9 mm)
Block width; + 30 %, - 20 % of the specified value (150mm)
Block length; + 30 %, - 20 % of the specified value (50mm)
Block pitch; + 5 %, - 5 % of the specified value. (250mm)

Retroreflectivity

AS/NZS 2009 Type B (drop-on) glass beads applied uniformly at a minimum rate of 300gm/m².
Dry retroreflectivity; a minimum of 150 mcd/m²/lux.
Wet retroreflectivity; a minimum of 80 mcd/m²/lux

Day Time Visibility.

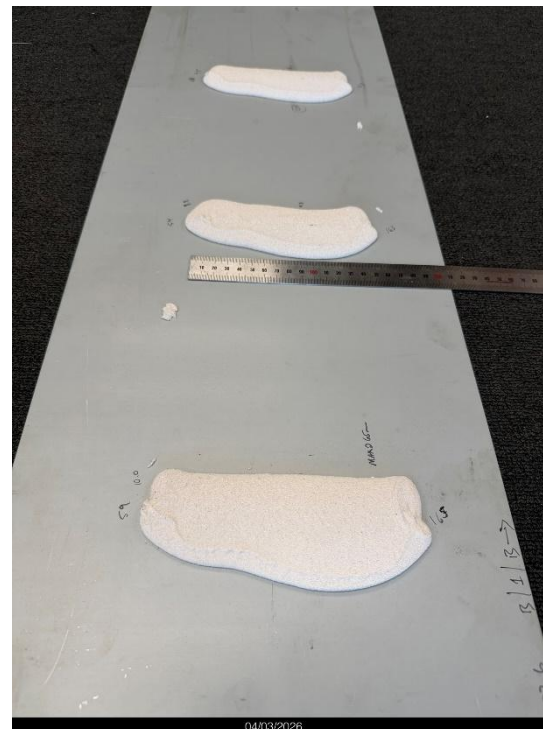
Minimum Qd of 100 mcd/m²/lux

Colour.

White; a discolouration of not more than 4/5 from colour Y35 of AS2007S

Skid Resistance.

N/A



CERTIFICATE OF COMPLIANCE NZTA T 12:2013
SCHEDULE THREE

Cold Applied Plastic Audio Tactile in combination with Agglomerate Cold Applied Plastic, in accordance with MOTSAM Part II, Coastline Markers Technical Specification, NZTA M24:2006, NZTA P30:2009 and NZTA T12:2013.

The markings when applied to flat electro-galvanised steel plates meet all dimension and performance requirements as specified in;
MOTSAM Part II, NZTA P30:2009 Specification for High Performance Roadmarkings and
NZTA T12:2013 Specification for Long-Life Pavement Marking Material Applicator Testing.

The values specified in MOTSAM Part II, NZTA P30:2009, NZTA T12:2013 used for determination of compliance were as follows:

Raised blocks.

Block height; + 15 %, - 5 % of the specified value. (8.0 mm)
Block width; + 30 %, - 20 % of the specified value (150mm)
Block length; + 30 %, - 20 % of the specified value (50mm)
Block pitch; + 5 %, - 5 % of the specified value. (500mm)

Structured (Agglomerate) Cold Applied Plastic.

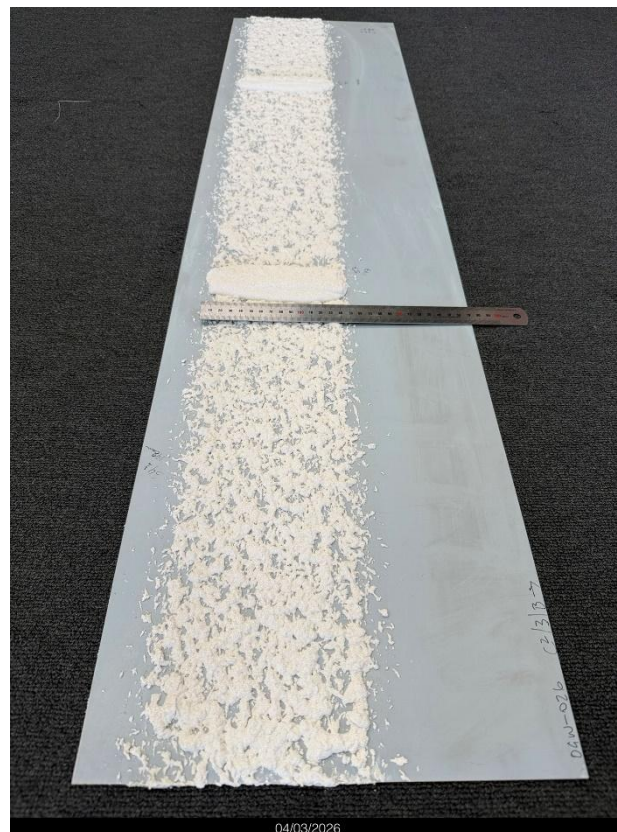
1. Material application rate of $2.5\text{kg/m}^2 \pm 10\%$
2. A coverage between 55% and 75%, and
3. Line appearing continuous when sitting in a passenger car.

Retroreflectivity.

AS/NZS 2009 Class B (drop-on) glass beads applied uniformly at a minimum rate of 300gm/m^2 .
Dry retro reflectivity; a minimum of $150\text{mcd/m}^2/\text{lux}$.
Wet retro reflectivity; a minimum of $80\text{mcd/m}^2/\text{lux}$

Skid Resistance.

N/A



CERTIFICATE OF COMPLIANCE NZTA T 12:2013

Registration Details:

[NZRF Stamp & Unique Number]

6233



Initial Certificate Testing Officer:

Ross Ridings
Quality Surveillance Ltd

T/12 Testing Officer:

Lance Wright
Fulton Hogan Ltd, T/A Coastline Markers

Signed:

A handwritten signature in blue ink, appearing to be 'Lance Wright'.

Date of Expiry:

13th February 2027