

CERTIFICATE OF COMPLIANCE NZTA T 12:2013

Applicator: 2006 Hofmann H18, Type LA Cold Applied Plastic Applicator, Registration # CZC276

Owner: Combined Road & Traffic Services Ltd,
P O Box 7013
Rotorua 3074



Test Description: The long life pavement marking applicator described by this certificate has been tested under the conditions described and found to comply with the relevant requirements of NZTA Specification NZTA T12:2013

Test Conditions: The scope of the NZTA T12: 2013 recertification was as follows;

- Schedule B; Application of Audio Tactile Profile Markings with Cold Applied Plastic in accordance with NZTA M24:2006, NZTA P30:2008, NZTA T12:2013 and NT (Northern Territories) Standard

Test Identification:

- The Registration plate of the tested unit is CZC276 and the Chassis number is 190/0048
- The tests were carried out at the CRTS depot, 20 Katoro Rd, Rotorua on the 12th of August 2021.
- The materials used for both tests were; Damar CAP Yellow ATP ARZ1946Z and Potters AC-07 adherence promoting coated glass beads.

Equipment Tested:	65 mm CAP Box	Hofmann	H18/165
	Catalyst Unit	Kadcam	0006
	Bead Applicator	Handock	H/18
	Compressor	Boge SK36	513370
	Speedometer	Novo Autolog 200	H/18

Applicator Speeds:	100mm	150mm	200mm
	Schedule B	2.5 km/h	

Special Notes: 1. The applicator is not capable of applying turn arrows.

SCHEDULE B

Audio Tactile Profile Markings with Cold Applied Plastic in accordance with NZTA M24:2006, NZTA P30:2008 and NZTA T12:2013

The markings when applied to flat electro-galvanised steel plates met all dimension and performance requirements as specified in;
NZTA M24:2006 Specification for Audio Tactile Profiled Roadmarkings,
NZTA P30:2009 Specification for High Performance Roadmarkings and
NZTA T12:2013 Specification for Long-Life Pavement Marking Material Applicator Testing.

The values specified in NZTA M24:2006, NZTA P30:2009 and NZTA T12:2013 used for determination of compliance were as follows:

Gap length between segments

Where gap is 3.0m or more: $\pm 300\text{mm}$
Where gap is less than 3.0m but greater than 1.0m; $\pm 150\text{mm}$
Where gap is less than 1.0m: $\pm 50\text{mm}$

Length of segment.

Where segment is longer than 5.0m; $\pm 150\text{mm}$
Where segment is shorter than 5.0m but longer than 1.0m; $\pm 75\text{mm}$
Where segment is shorter than 1.0m; $\pm 50\text{mm}$

Raised blocks.

Block height; + 15 %, - 5 % of the specified value. (9 mm)
Block width; + 30 %, - 20 % of the specified value (150mm)
Block length; + 30 %, - 20 % of the specified value (50mm)
Block pitch; + 5 %, - 5 % of the specified value. (250mm)

Retroreflectivity.

AS/NZS 2009 Class B (drop-on) glass beads applied uniformly at a minimum rate of 300gm/m^2 .
Dry retroreflectivity; a minimum of $150\text{ mcd/m}^2/\text{lux}$.
Wet retroreflectivity; a minimum of $80\text{ mcd/m}^2/\text{lux}$

Day Time Visibility.

Minimum Qd of $100\text{ mcd/m}^2/\text{lux}$

Colour.

Yellow; a discolouration of not more than 4/5 from colour Y13 – Y14 of AS2007S

Skid Resistance.

50 BPN or greater for roadmarkings with a dry film thickness of 0.9 mm or greater



SCHEDULE C

Structured Markings with Cold Applied Plastic in accordance with NZTA P30:2008 and NZTA T12:2013

The markings when applied to flat electro-galvanised steel plates met all dimension and performance requirements as specified in;
NZTA P30:2009 Specification for High Performance Roadmarkings and
NZTA T12:2013 Specification for Long-Life Pavement Marking Material Applicator Testing.

The values specified in NZTA P30:2009 and NZTA T12:2013 used for determination of compliance were as follows:

Gap length between segments

Where gap is 3.0m or more: $\pm 300\text{mm}$
Where gap is less than 3.0m but greater than 1.0m; $\pm 150\text{mm}$
Where gap is less than 1.0m: $\pm 50\text{mm}$

Length of segment.

Where segment is longer than 5.0m; $\pm 150\text{mm}$
Where segment is shorter than 5.0m but longer than 1.0m;
 $\pm 75\text{mm}$
Where segment is shorter than 1.0m; $\pm 50\text{mm}$

Line width.

All line widths; $+ 10\%$, $- 5\%$ of the specified value. (150 mm)

Structured (Agglomerate) Cold Applied Plastic.

1. Minimum material application rate of 3kg/m^2
2. A coverage between 55% and 75%, and
3. Line appearing continuous when sitting in a passenger car.

Retroreflectivity.

AS/NZS 2009 Class B (drop-on) glass beads applied uniformly at a minimum rate of 275gm/m^2 .
Dry retroreflectivity; a minimum of $150\text{ mcd/m}^2/\text{lux}$.
Wet retroreflectivity; a minimum of $80\text{ mcd/m}^2/\text{lux}$

Day Time Visibility.

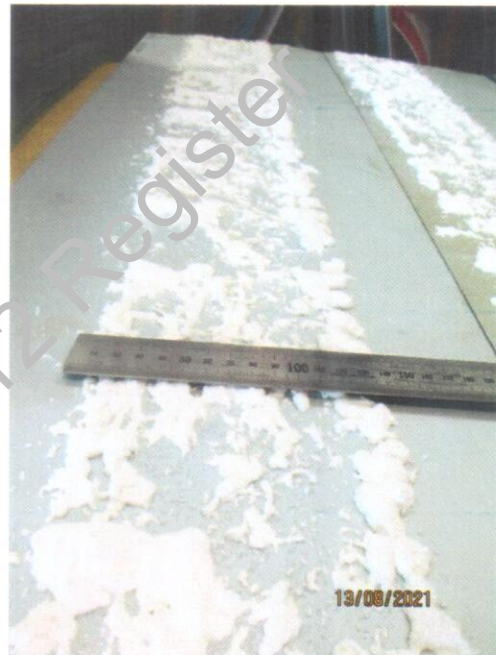
Minimum Qd of $100\text{ mcd/m}^2/\text{lux}$

Colour.

White; a discolouration of not more than 4/5 from colour Y35 of AS2007S
Yellow; a discolouration of not more than 4/5 from colour Y13 – Y14 of AS2007S

Skid Resistance.

50 BPN or greater for roadmarkings with a dry film thickness of 0.9 mm or greater



CERTIFICATE OF COMPLIANCE NZTA T 12:2013

Registration Details:

[NZRF Stamp & Unique Number]

5398



Initial Certificate Testing Officer:

Ross Ridings
Quality Surveillance Ltd

T/12 Testing Officer:

Bruce Belton
Mark Roads Ltd

Signed:

Bj Belton

Date of Expiry:

12th August 2022

Copied from T 12 Register