



# BRITESITE THERMOPLASTIC COLOURED SURFACING



BRITESITE - KEEPING DRIVERS ON THE ROAD

# BRITESITE THERMOPLASTIC COLOURED SURFACING

## **Features:**

- Supplied uncoloured in 1 Ton lots
- Pigment added at melting mixing stage in the premelter
- Crushed quartz for high skid resistance
- Crushed glass provides initial skid resistance

# BRITESITE THERMOPLASTIC COLOURED SURFACING

## **Advantages:**

- Stock versatility
  - (a) Order pigment as required for each job.
  - (b) No stocking of coloured aggregates or delays in importing coloured aggregates
- 7 year on road trial of Yellow /colour retention (coloured aggs can loose coating over time )
- Colour change with lower cost unpigmented thermoplastic

# BRITESITE THERMOPLASTIC COLOURED SURFACING

## **Benefits:**

- Unpigmented base lower stock holding cost, expensive pigment ordered as required.
- No expensive coloured aggregates
- Colour change using cheaper unpigmented material
- Fast hardening /drying lower traffic management and application costs
- Thermoplastic binder lower cost than epoxy

# LOWER HUTT



# NAENAE



# VIADUCT BASIN



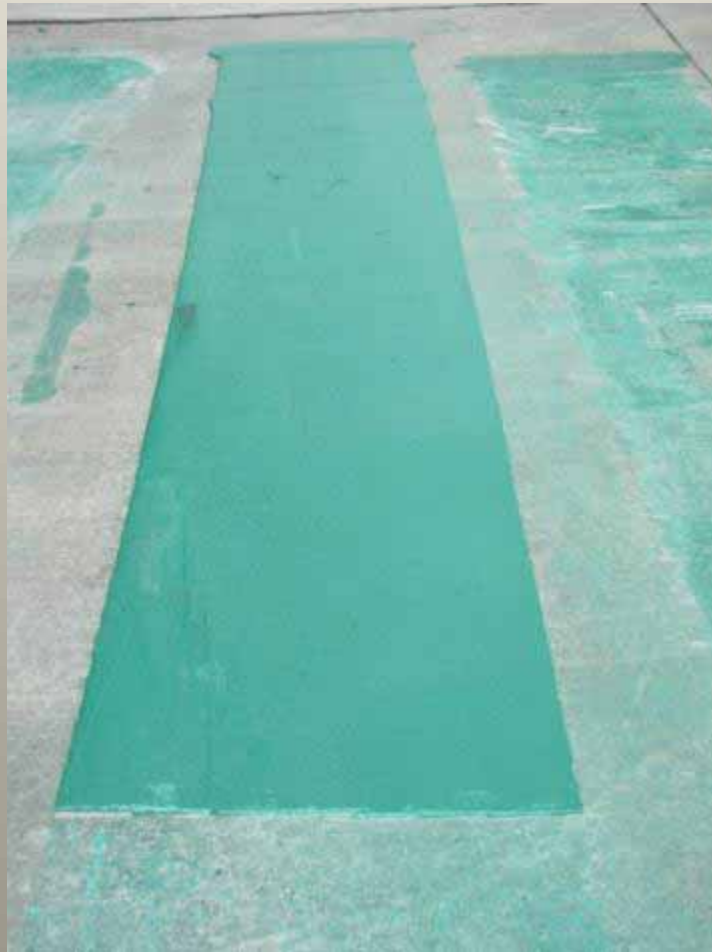


# 600MM HAND SCREED





# 700MM SCREED CART TRIAL



# EQUIPMENT & STAFF REQUIREMENTS

- Premelter (2 x 135 Litre)
  - Approximately \$18,300.00 + GST (NZD)
- Hand Screeds, Gas Torch, Buckets, Oven
  - Approximately \$2,000.00 + GST (NZD)
- Optional Screed Cart
  - Approximately \$6,600.00 +GST (NZD)
- 3 People
  - Screeder, Bucket Man & Crushed Glass Applicator

# PREMELTER



# LOW COST HAND SCREED EQUIPMENT



# SCREED CART

