

## CERTIFICATE OF COMPLIANCE NZTA T/12:2013

**Applicator:** Type LB Mac Striper Mini Mac 600, registration number UB5372, Thermoplastic Applicator

**Owner:** Downers NZ Ltd  
Private Bag 14925  
Pamure 1741  
Auckland

**Test Description:** **The pavement marking applicator as described by this certificate has been tested under the conditions described and found to comply with the relevant requirements of TNZ Specification NZTA T/12:2013.**

**Test Conditions:** The scope of the TNZ T/12 Entry Qualification was as follows:  
1) Application of Extruded Flat Thermoplastic to Schedule One, with thickness in accordance with P/22:2006.

**Test Identification:** The tests were carried out at the Downer NZ Ltd Depot, 645 Great South Road, Penrose on the 29th of September 2020.  
The Applicator Chassis Number is 6005.  
The material used for the tests was:  
Ennis Premium Extrusion Grade for Schedule One,

<b>Equipment Tested:</b>	Extrusion Head	Minimac	UB5372 A
	Extruder	Minimac 600	6005
	Temperature Controller	Carel	
	Compressor	Atlas Copco	269742
	Speedometer	Roadmark 3	UB537A
	Bead Guns	Graco 1,2 and 3	

<b>Applicator Speeds:</b>	<b>Line Width</b>				
	<b>Schedule One</b>	<b>100mm</b>	<b>150mm</b>	<b>200mm</b>	<b>300mm</b>
			2.45		

**Special Notes:** The applicator is not capable of applying turn arrows.

## CERTIFICATE OF COMPLIANCE NZTA T/12:2013

### Schedule One

#### Extruded Flat Thermoplastic in Accordance with P/22:2006

The markings when applied to flat electro-galvanised steel plates met all dimension and performance requirements as specified in TNZ P22: 2006 Specification for Reflectorised Pavement Marking.

The values specified in TNZ P/22:2006 used for determination of compliance were as follows:

##### Gap Length Between Segments

Where gap is 3.0m or more  $\pm 300\text{mm}$

Where gap is less than 3.0m but greater than 1.0m  $\pm 150\text{mm}$

Where gap is 1.0m or less  $\pm 50\text{mm}$

##### Length of Segments

Where segment is longer than 5.0m  $\pm 150\text{mm}$

Where segment is shorter than 5.0m but longer than 1.0m  $\pm 75\text{mm}$

Where segment is 1.0m or shorter  $\pm 50\text{mm}$

##### Thermoplastic Line Width

All line widths  $+10\% - 5\%$

##### Thermoplastic Height

New markings – asphalt 2.0 – 2.5mm

New markings – chipseal 2.0 – 3.0mm

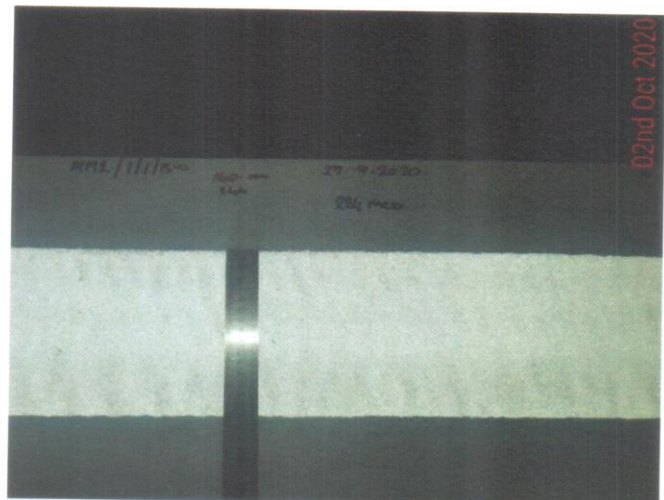
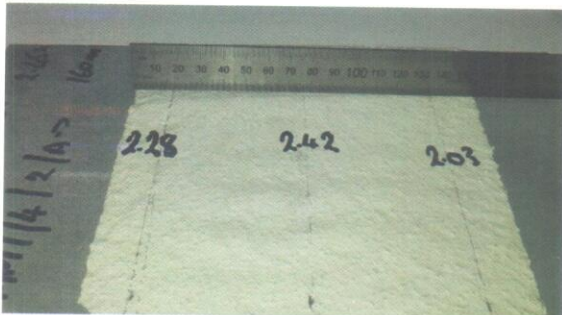
##### Retroreflectivity

Glass beads applied uniformly at a minimum rate of 275 grams/m<sup>2</sup>.

Bead application even with correct embedment

##### Skid Resistance

50 – 65 BPN



Downer NZ Ltd Mini Mac UB5372 September 2020

**CERTIFICATE OF COMPLIANCE**  
**NZTA T/12:2013**



Registration Details: [NZRF Stamp & Unique Number}

Initial Certificate  
Issuing Officer:

5247  
R J Ridings  
Quality Surveillance Ltd

 The New Zealand  
**Roadmarkers**  
Federation Inc  
PO Box 13 805, Auckland  
Phone: (09) 625 7470

Testing Officer:

P Del Favero  
Downer NZ Ltd

Signed:



Date of Expiry:

29<sup>th</sup> September 2021

Downer NZ Ltd Mini Mac UB5372 September 2020