

CERTIFICATE OF COMPLIANCE NZTA T 12:2012

Applicator: 2013 Hino FC /
Kadcam Type LA
CAP Striper,
Registration number
GTL361



Owner: Fulton Hogan Ltd,
T/A Coastline Markers
PO Box 302-528
North Harbour
Auckland

Test Description: The pavement marking applicator as described by this certificate has been tested under the conditions described and found to comply with the relevant requirements of TNZ Specification TNZ T/12:2012.

Test Conditions: The scope of the Certification was as follows:
 1) Application of ATP to Schedule B Audio Tactile Markings,
 2) Application of Agglomerate Cold Applied Plastic to Schedule C, Agglomerate Cold Applied Plastic in Accordance with CML Technical Specification, NZTA P 30:2008 and NZTA T 12:2012,
 3) Application of Agglomerate Flat Cold Applied Plastic and Cold Applied Plastic Audio-Tactile to Schedule D in Accordance with NZTA P 30:2008, NZTA P/30:2008, and NZTA T 12:2012

Test Identification: The tests were carried out at the Coastline Markers Test Site at Albany on the 10th of January 2019.
 The Applicator Chassis Number is JHDFD8JLKXXX12646.
 The material used for the tests was:
 Damar Bascoplast 211 for all Schedules
 Potters Pristine AC-07 Drop-on Glass Beads (AS/NZS 2009) for all Schedules.

Equipment Tested:

CAP Feed pump	Kadcam	1269
CAP 150mm Box	Kadcam	1269/150
CAP Structure Unit	Kadcam	1269
Compressor	Fusheng TA80	1269
Speedometer	CML	1269
Bead Guns	Jetline	

Applicator Speeds (kph):

Schedule	Line Width		
	100mm	150mm	200mm
B		.96	
C		1.2	
D		.95	

CERTIFICATE OF COMPLIANCE NZTA T 12:2012

Schedule B

Cold Applied Plastic Audio-Tactile tested at 250 and 500 pitch in Accordance with CML Technical Specification, NZTA P 24, NZTA P 30:2008, and NZTA T 12:2013

The markings when applied to flat electro-galvanised steel plates met all dimension and performance requirements as specified in NZTA M 24:2006 Specification for Audio Tactile Profiled Roadmarkings, NZTA P 30:2008 Specification for High Performance Roadmarkings and NZTA T 12:2013 Specification for Long-Life Pavement Marking Material Application Testing.

The values specified in NZTA M 24, NZTA P 30 and NZTA T 12 used for determination of compliance were as follows:

Gap Length Between Segments

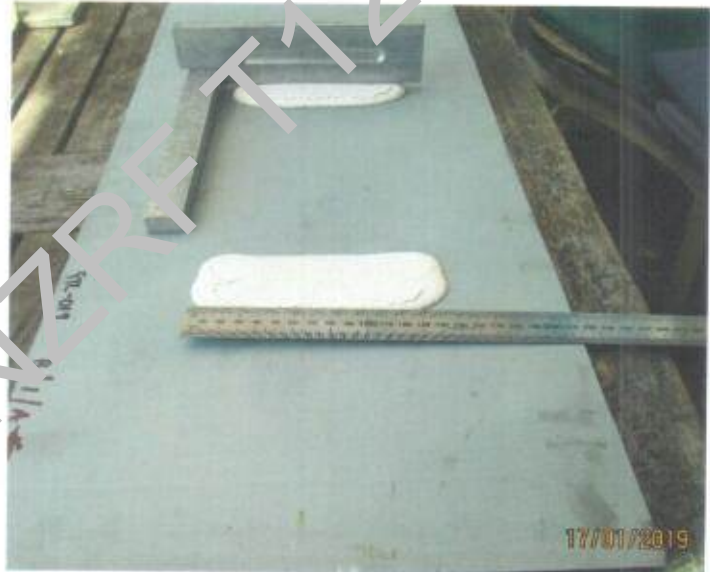
Where gap is 3.0m or more ± 300 mm
Where gap is less than 3.0m but greater than 1.0m ± 150 mm
Where gap is 1.0m or less ± 50 mm

Length of Segments

Where segment is longer than 5.0m ± 150 mm
Where segment is shorter than 5.0m but longer than 1.0m ± 75 mm
Where segment is 1.0m or shorter ± 50 mm

Raised Blocks

Spacing between blocks $+5\%$ -5% of specified value (250mm)
Spacing between blocks $+5\%$ -5% of specified value (500mm)
Length of block $+30\%$ -20% of specified value (50mm)
Width of block $+10\%$ -5% of specified value (150mm)
Block height $+15\%$ -5% of specified value (9.0mm)



Retroreflectivity

AS/NZS 2009 Class B (drop-on) glass beads applied uniformly at a minimum rate of 275 gram/m²

1. Reflectivity (dry - R): A minimum of 150 mcd/m²/lux.
2. Reflectivity (condition of wetness - RW): A minimum of 80 mcd/m²/lux.

Skid Resistance

Not Applicable

CERTIFICATE OF COMPLIANCE NZTA T 12:2012

Schedule C

Agglomerate Flat Cold Applied Plastic in Accordance with CML Technical Specification, NZTA P 30:2008, and NZTA T 12:2003

The markings when applied to flat electro-galvanised steel plates met all dimension and performance requirements as specified in NZTA P 30: 2008 Specification for High Performance Roadmarkings.

The values specified in NZTA P 30:2008 used for determination of compliance were as follows:

Gap Length Between Segments

Where gap is 3.0m or more \pm 300mm

Where gap is less than 3.0m but greater than 1.0m \pm 150mm

Where gap is 1.0m or less \pm 50mm

Length of Segments

Where segment is longer than 5.0m \pm 150mm

Where segment is shorter than 5.0m but longer than 1.0m \pm 75mm

Where segment is 1.0m or shorter \pm 50mm



Cold Applied Plastic Line Width

All line widths $+10\%$ - -5%

Agglomerate Cold Applied Plastic

Material application rate of 2.5 ± 0.2 kg/m², with coverage between 55 and 75%, and line appearing continuous when sitting in a passenger car

Retroreflectivity

AS/NZS 2009 Class B (drop-on) glass beads applied uniformly at a minimum rate of 275 g/m²

1. Reflectivity (dry - R): A minimum of 150 mcd/m²/lux.
2. Reflectivity (condition of wetness - RW): A minimum of 80 mcd/m²/lux.

Skid Resistance

Greater than 50 BPN but less than 65BPN

CERTIFICATE OF COMPLIANCE NZTA T 12:2012

Schedule D

Agglomerate Flat Cold Applied Plastic and Cold Applied Plastic Audio-Tactile tested at 250 and 500 pitch in Accordance with NZTA M 24:2006, NZTA P 30:2008, and NZTA T 12:2012

The markings when applied to flat electro-galvanised steel plates met all dimension and performance requirements as specified in NZTA M 24:2006 Specification for Audio Tactile Profiled Roadmarkings, NZTA P 30:2008 Specification for High Performance Roadmarkings and NZTA T 12: 2012 Specification for Long-Life Pavement Marking Material Application Testing.

The values specified in NZTA M 24, NZTA P 30 and NZTA T 12 used for determination of compliance were as follows:

Gap Length Between Segments

Where gap is 3.0m or more $\pm 300\text{mm}$

Where gap is less than 3.0m but greater than 1.0m
 $\pm 150\text{mm}$

Where gap is 1.0m or less $\pm 50\text{mm}$

Length of Segments

Where segment is longer than 5.0m $\pm 150\text{mm}$

Where segment is shorter than 5.0m but longer than
1.0m $\pm 75\text{mm}$

Where segment is 1.0m or shorter $\pm 50\text{mm}$



Raised Blocks

Spacing between blocks $+5\%$ -5% of specified value (250mm)

Spacing between blocks $+5\%$ -5% of specified value (500mm)

Length of block $+30\%$ -20% of specified value (50mm)

Width of block $+10\%$ -5% of specified value (150mm)

Block height $+15\%$ -5% of specified value (7.0mm)

ATP height $+15\%$ -5% of specified value (10.0mm)

Agglomerate Cold Applied Plastic

Material application rate of $2.5 \pm 0.2 \text{ kg/m}^2$, with coverage between 55 and 75%, and line appearing continuous when sitting in a passenger car

Retro-reflectivity

As NZS 2009 Class B (drop-on) glass beads applied uniformly at a minimum rate of 275 grams/m²

1. Reflectivity (dry - R): A minimum of 150 mcd/m²/lux.
2. Reflectivity (condition of wetness - RW): A minimum of 80 mcd/m²/lux.

Skid Resistance

Greater than 50 BPN but less than 65BPN

CERTIFICATE OF COMPLIANCE
NZTA T 12:2012

Registration Details: [NZRF Stamp & Unique Number]

4840



**Initial Certificate
Issuing Officer:**

R J Ridings
Quality Surveillance Ltd

Testing Officer:

Bruce Belton
Mark Roads Ltd

Signed: 

Date of Expiry:

10th January 2020

Copied from NZRF T12 Register