

CERTIFICATE OF COMPLIANCE NZTA T 12:2013

Applicator: 2010 Coastline Markers, Pedestrian Controlled, Type LB Cold Applied Plastic Applicator.

Owner: Fulton Hogan Ltd, T/A Coastline Markers
 P O Box 302-528
 North Harbour 0751



Test Description: The long life pavement marking applicator described by this certificate has been tested under the conditions described and found to comply with the relevant requirements of NZTA Specification NZTA T12:2013

Test Conditions: The scope of the NZTA T12: 2013 recertification was as follows;

- Application of Cold Applied Plastic to Schedule (a), Plain Flat Markings in accordance with Coastline Markers Technical Specification NZTA T50:2008 and NZTA T12:2013

- Test Identification:**
- The Chassis number of the tested unit is CAPB001
 - The tests were carried out at Coastline Markers depot in Albany on the 19th of November 2018.
 - The materials used for the tests was: Damar CAP Parts A & B, Potters AC-07 adherence promoting coated drop-on glass beads.

Equipment Tested:	Component	Identification
CAP Spray Gun	Larius Two	CAPB001
CAP Pump	Graco Viscount 1:1	CAPB001
Bead Applicator	Handock	CAPB001
Compressor	Campbell Hausfeld	VT470000AJ
Speedometer	Autoline 2000	CAPB001

Applicator Speeds:	100mm	150mm	200mm
Schedule (a)	4.2km/h	3.3 km/h	1.2 km/h

SCHEDULE (a)

Flat Spray Cold Applied Plastic in accordance with Coastline Markers Technical Specification, NZTA P30:2008 and NZTA T12:2013

The markings when applied to flat electro-galvanised steel plates met all dimension and performance requirements as specified in;
 NZTA P30:2009 Specification for High Performance Roadmarkings and
 NZTA T12:2013 Specification for Long-Life Pavement Marking Material Applicator Testing

The values specified in NZTA P30:2009 and NZTA T12:2013 used for determination of compliance were as follows:

Gap length between segments

Where gap is 3.0m or more: $\pm 300\text{mm}$
 Where gap is less than 3.0m but greater than 1.0m; $\pm 150\text{mm}$
 Where gap is less than 1.0m: $\pm 50\text{mm}$

Length of segment.

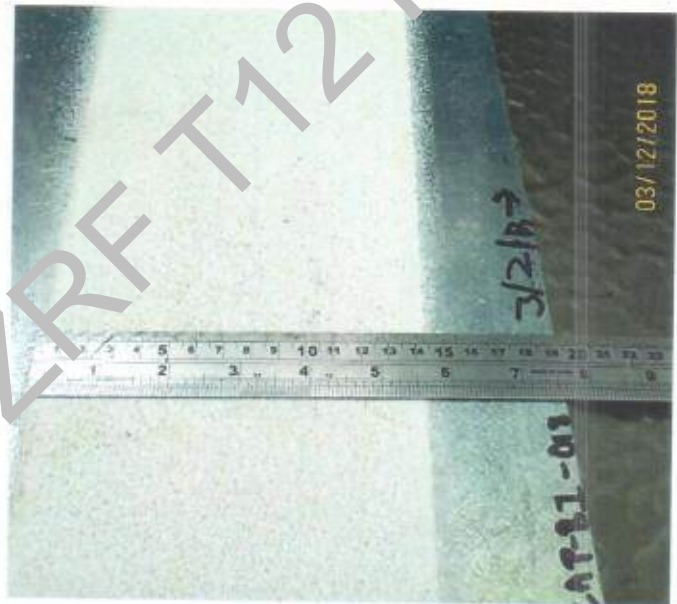
Where segment is longer than 5.0m; $\pm 150\text{mm}$
 Where segment is shorter than 5.0m but longer than 1.0m; $\pm 75\text{mm}$
 Where segment is shorter than 1.0m; $\pm 50\text{mm}$

Line width.

All line widths; + 10 %, - 5 % of the specified value. (150 mm)

Flat Spray Cold Applied Plastic.

Dry film thickness (DFT) of $450\ \mu\text{m} \pm 75\ \mu\text{m}$.



Retroreflectivity.

AS/NZS 2009 Class B (drop-on) glass beads applied uniformly at a minimum rate of $275\text{gm}/\text{m}^2$.
 Dry retroreflectivity; a minimum of $150\ \text{mcd}/\text{m}^2/\text{lux}$.
 Wet retroreflectivity; a minimum of $80\ \text{mcd}/\text{m}^2/\text{lux}$

Day Time visibility.

Minimum Cd of $100\ \text{mcd}/\text{m}^2/\text{lux}$

Colour.

White; a discolouration of not more than 4/5 from colour Y35 of AS2007S
 Yellow; a discolouration of not more than 4/5 from colour Y13 – Y14 of AS2007S

Skid Resistance.

50 BPN or greater for roadmarkings with a dry film thickness of 0.9 mm or greater

CERTIFICATE OF COMPLIANCE NZTA T 12:2013

Registration Details:

[NZRF Stamp & Unique Number]



4829

Initial Certificate Testing Officer:

Ross Ridings
Quality Surveillance Ltd

4829

T/12 Testing Officer:

Bruce Belton
Mark Roads Ltd

Signed:

Bj Belton

Date of Expiry:

19th November 2019

Copied from NZRF T12 Register