

CERTIFICATE OF COMPLIANCE NZTA T 12:2013

Applicator: 1998 Mitsubishi Canter / Coastline
Markers Cold Applied Plastic
Applicator, registration number
XA4391

Type: LA CAP

Owner: Fulton Hogan Ltd, T/A Coastline
Markers
P O Box 302-528
North Harbour 0751



Test Description: The long-life pavement marking applicator described by this certificate has been tested under the conditions described and found to comply with the relevant requirements of NZTA Specification NZTA T12:2013

Test Conditions: The scope of the NZTA T12: 2013 recertification was as follows;

1. Application of Plain Flat Cold Applied Plastic to Schedule Four, Flat Spray Cold Applied Plastic in accordance with Coastline Markers Technical Specification, NZTA P10:2008 and NZTA T12:2013
Tested at 100mm, 150mm & 200mm

- Test Identification:**
- The Chassis number of the tested unit is 7AIFEI26WPA02586
 - The tests were carried out at Coastline Markers depot in Albany on the 19th of November 2018
 - The materials used for the tests were:
Dima CAP Parts A & B
Powers AC-07 adherence promoting coated drop-on glass beads.

Equipment Tested:			
CAP Spray Guns	Handock	45794-1 & 45794-2	
CAP Pump	Graco Viscount II	45794	
Bead Applicators	CRM Curtain Guns	45794	
Compressor	Fusheng TA80	8830199	
Speedometer	Kadcam Autoline 200	45794	

Applicator Speeds (kph)	Schedule One	100mm	150mm	200mm
		10.3	7.8	5.5

SCHEDULE ONE

Flat Spray Cold Applied Plastic in accordance with Coastline Markers Technical Specification, NZTA P30:2008 and NZTA T12:2013

The markings when applied to flat electro-galvanised steel plates met all dimension and performance requirements as specified in;

NZTA P30:2009 Specification for High Performance Roadmarkings and

NZTA T12:2013 Specification for Long-Life Pavement Marking Material Applicator Testing.

The values specified in NZTA P30:2009 and NZTA T12:2013 used for determination of compliance were as follows:

Gap length between segments

Where gap is 3.0m or more: $\pm 300\text{mm}$

Where gap is less than 3.0m but greater than 1.0m;
 $\pm 150\text{mm}$

Where gap is less than 1.0m: $\pm 50\text{mm}$

Length of segment.

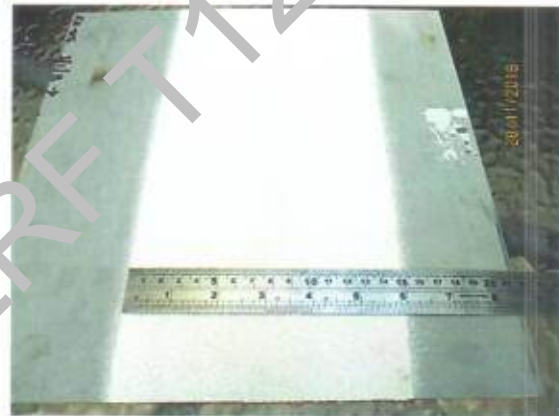
Where segment is longer than 5.0m; $\pm 150\text{mm}$

Where segment is shorter than 5.0m but longer than 1.0m; $\pm 75\text{mm}$

Where segment is shorter than 1.0m; $\pm 50\text{mm}$

Line width.

All line widths; + 10 %, - 5 % of the specified value.
(150 mm)



Flat Spray Cold Applied Plastic.

Dry film thickness (DFT) of $450\mu\text{m} - 75\mu\text{m}$.

Retroreflectivity.

AS/NZS 2009 Class B (drop-on) glass beads applied uniformly at a minimum rate of $275\text{gm}/\text{m}^2$.

Dry retroreflectivity; a minimum of $150\text{mcd}/\text{m}^2/\text{lux}$.

Wet retroreflectivity; a minimum of $80\text{mcd}/\text{m}^2/\text{lux}$

Day Time Visibility.

Minimum of $100\text{mcd}/\text{m}^2/\text{lux}$

Colour.

White; a discolouration of not more than 4/5 from colour Y35 of AS2007S

Yellow; a discolouration of not more than 4/5 from colour Y13 - Y14 of AS2007S

Skid Resistance.

50 BPN or greater for roadmarkings with a dry film thickness of 0.9 mm or greater

CERTIFICATE OF COMPLIANCE NZTA T 12:2013

Registration Details: [NZRF Stamp & Unique Number]



4828

Initial Certificate Testing Officer: Ross Ridings
Quality Surveillance Ltd

4828

T/12 Testing Officer: Bruce Belton
Mark Roads Ltd

Signed: *Bj Belton*

Date of Expiry: 19th November 2019

Copied from NZRF T12 Register