

CERTIFICATE OF COMPLIANCE NZTA T/12:2013

Applicator: 2009 Hofmann H18 CAP
Applicator, NZTA registration number EYY 807

Applicator Type: LA CAP

Owner: Combined Road and Traffic Services Ltd,
PO Box 7013
Rotorua 3042

Test Description: **The pavement marking applicator as described by this certificate has been tested under the conditions described and found to comply with the relevant requirements of TNZ Specification NZTA T/12:2013.**

Test Conditions: The scope of the Certification was as follows:

- Schedule 1: Application of Arditoacile Cold Applied Plastic Markings in accordance with NZTA M/24:2006, NZTA P30:2008 and NZTA T12:2013.
- Schedule 2: Application of Structured Cold Applied Plastic Markings in accordance with CRIS Technical Specification, NZTA P30:2008 and NZTA T12:2013.

Test Identification: The tests were carried out at Combined Road & Traffic Services Ltd, 20 Katoro Drive, Rotorua.
The last day of testing was on August 9th 2018.
The Applicator Chassis Number is 192/0006.
The test materials that were used:

- Demar Bascoplast White DR211
- Potlerts AC-07 adherence promoting coated glass beads.

Equipment Tested:	Structured Unit	Kadcam	0006
	Structured Spindle	Wisbrob	0006
	ATP CAP Box	Kadcam	0006
	Catalyst Unit	Kadcam	0006
	Bead Applicator	Graco	0006
	Compressor	Boge SK36	0006
	Speedometer	RMSD Autolog 200	0006

Applicator Speeds (kph):	Line Width		
	Schedule	100mm	200mm
	One	2.0 km/h	
	Two	2.7 km/h	

Special Notes: The applicator is not capable of applying arrows.

CERTIFICATE OF COMPLIANCE NZTA T/12:2013

Schedule One

Cold Applied Plastic Audio Tactile Markings, in Accordance with NZTA M24: 2006, NZTA P/30:2008 and T/12:2013

The markings when applied to flat electro-galvanised steel plates meet all dimension and performance requirements as specified in:

NZTA M24: 2006 Specification for Audio Tactile Profiled Roadmarkings,
NZTA P30:2009 Specification for High Performance Roadmarkings and
NZTA T/12:2013 Specification for Long-Life Pavement Marking Material Applicator Testing.

The values specified in NZTA M/24, NZTA P/30 2009 and NZTA T/12:2013 used for determination of compliance were as follows.

Raised Blocks

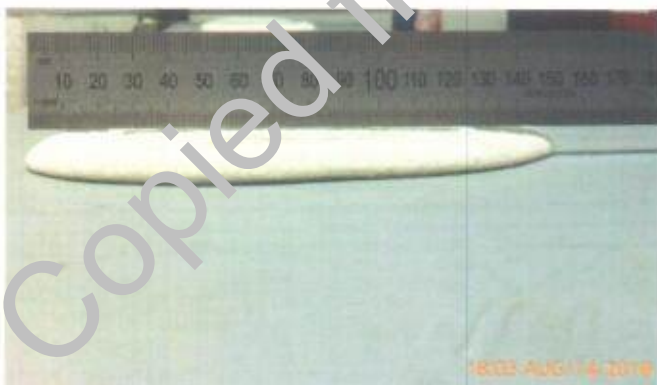
Block pitch +5% - 5% of specified value (250mm)
Block length +30% - 20% of specified value (50mm)
Block width +30% - 20% of specified value (150mm)
Block height -5% +15% of specified value (9.0mm)

Retroreflectivity

AS/NZS 2009 Type B (drop-on) glass beads applied uniformly at a nominal rate of 275 grams/m²
Reflectivity (dry – R): A minimum of 150 mcd/m²/lux.
Reflectivity (condition of wetness – RW): A minimum of 80 mcd/m²/lux.

Skid Resistance

Not Applicable



CERTIFICATE OF COMPLIANCE NZTA T/12:2013

Schedule Two

Structured Cold Applied Plastic Markings in Accordance with CRTS Technical Specification, NZTA P30:2008, and NZTA T12:2013

The markings when applied to flat electro-galvanised steel plates met all dimension and performance requirements as specified in:

NZTA P30: 2009 Specification for High Performance Roadmarkings.

The values specified in NZTA P30:2009 used for determination of compliance were as follows:

Gap Length Between Segments.

Where gap is 3.0m or more $\pm 300\text{mm}$

Where gap is less than 3.0m but greater than 1.0m $\pm 150\text{mm}$

Where gap is 1.0m or less $\pm 50\text{mm}$

Length of Segments.

Where segment is longer than 5.0m $\pm 150\text{mm}$

Where segment is shorter than 5.0m but longer than 1.0m $\pm 75\text{mm}$

Where segment is 1.0m or shorter $\pm 50\text{mm}$

Line Width

All line widths $+10\% - 5\%$ of the specified value. ($\pm 50\text{mm}$)

Structured (Agglomerate) Cold Applied Plastic.

- 1: Minimum material application rate of 2.4kg/m^2
- 2: A coverage of between 55% and 75%
- 3: Line appears continuous when sighted in a passenger car.

Retroreflectivity.

AS/NZS 2009 Type B (drop-on) glass beads applied uniformly at a nominal rate of 275 grams/m^2

Reflectivity (dry - R): A minimum of $150\text{ mcd/m}^2/\text{lux}$.

Reflectivity (condition of wetness - RW): A minimum of $80\text{ mcd/m}^2/\text{lux}$.

Skid Resistance

50 BPN but less than 65 BPN for roadmarkings with a dry film thickness of 0.9 mm or greater.



CERTIFICATE OF COMPLIANCE
NZTA T/12:2013



PN: H18a

8.53 AUG/ 9/2018

Registration Details: [NZRI Stamp & Unique Number]

Initial Certificate

Issuing Officer: R. Ridings
Quality Surveillance Ltd

4719

 The New Zealand
Roadmarkers
Federation Inc
PO Box 13 805, Auckland
Phone: (09) 625 7470

Testing Officer: P Del Favero
Downer NZ Ltd

Signed:



Date of Expiry: 9th August 2019