

CERTIFICATE OF COMPLIANCE NZTA T 12:2013

Applicator: 1998 Mitsubishi Canter / Coastline Markers Cold Applied Plastic Applicator, registration number XA4391

Type: LA CAP

Owner: Fulton Hogan Ltd, T/A Coastline Markers
P O Box 302-528
North Harbour 0751



Test Description: The long life pavement marking applicator described by this certificate has been tested under the conditions described and found to comply with the relevant requirements of NZTA Specification NZTA T12:2013

Test Conditions: The scope of the NZTA T12: 2013 recertification was as follows;

1. Application of Plain Flat Cold Applied Plastic to Schedule Four, Flat Spray Cold Applied Plastic in accordance with Coastline Markers Technical Specification, NZTA P50:2008 and NZTA T12:2013
Tested at 100mm, 150mm & 200mm

- Test Identification:**
- The Chassis number of the tested unit is 7A1FEI26WPA02586
 - The tests were carried out at Coastline Markers depot in Albany on the 4th of December 2011
 - The materials used for the tests were:
Demar CAP Parts A & B
Gottets AC-07 adherence promoting coated drop-on glass beads.

Equipment Tested:			
CAP Spray Guns	Handock	45794-1 &	45794-2
CAP Pump	Graco Viscount II	45794	
Bead Applicators	CRM Curtain Guns	45794	
Compressor	Fusheng TA80	8830199	
Speedometer	Kadcam Autoline 200	45794	

Applicator Speeds (kph)	Schedule One	100mm	150mm	200mm
		10.4	7.8	5.4

SCHEDULE ONE

Flat Spray Cold Applied Plastic in accordance with Coastline Markers Technical Specification, NZTA P30:2008 and NZTA T12:2013

The markings when applied to flat electro-galvanised steel plates met all dimension and performance requirements as specified in;

NZTA P30:2009 Specification for High Performance Roadmarkings and

NZTA T12:2013 Specification for Long-Life Pavement Marking Material Applicator Testing.

The values specified in NZTA P30:2009 and NZTA T12:2013 used for determination of compliance were as follows:

Gap length between segments

Where gap is 3.0m or more: $\pm 300\text{mm}$

Where gap is less than 3.0m but greater than 1.0m: $\pm 150\text{mm}$

Where gap is less than 1.0m: $\pm 50\text{mm}$

Length of segment

Where segment is longer than 5.0m; $\pm 150\text{mm}$

Where segment is shorter than 5.0m but longer than 1.0m; $\pm 75\text{mm}$

Where segment is shorter than 1.0m; $\pm 50\text{mm}$

Line width

All line widths; + 10 %, - 5 % of the specified value. (150 mm)

Flat Spray Cold Applied Plastic

Dry film thickness (DFT) of 450 μm $\pm 75\mu\text{m}$.

Retroreflectivity

AS/NZS 2009 Class 3 (drop-on) glass beads applied uniformly at a minimum rate of 275gm/m².

Dry retroreflectivity a minimum of 150 mcd/m²/lux.

Wet retroreflectivity, a minimum of 80 mcd/m²/lux

Day Time Visibility

Minimum Qd of 100 mcd/m²/lux

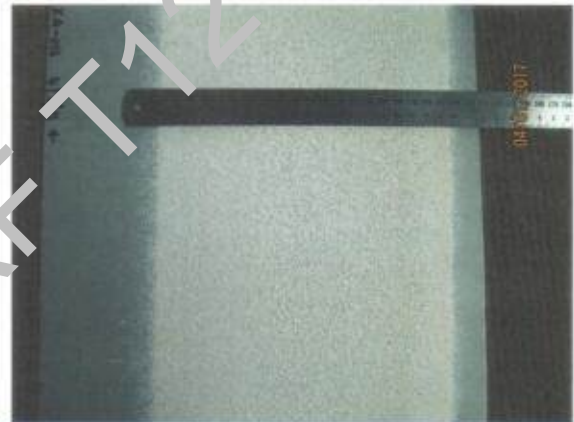
Colour

White; a discolouration of not more than 4/5 from colour Y35 of AS2007S

Yellow; a discolouration of not more than 4/5 from colour Y13 – Y14 of AS2007S

Skid Resistance

50 BPN or greater for roadmarkings with a dry film thickness of 0.9 mm or greater



CERTIFICATE OF COMPLIANCE NZTA T 12:2013

Registration Details:

[NZRF Stamp & Unique Number]

4657



Initial Certificate Testing Officer:

Ross Ridings
Quality Surveillance Ltd

T/12 Testing Officer:

Bruce Belton
Fulton Hogan Ltd, T/A Coastline Markers

Signed:

Bj Belton

Date of Expiry:

11th October 2018

Copied from NZRF T12 Register